
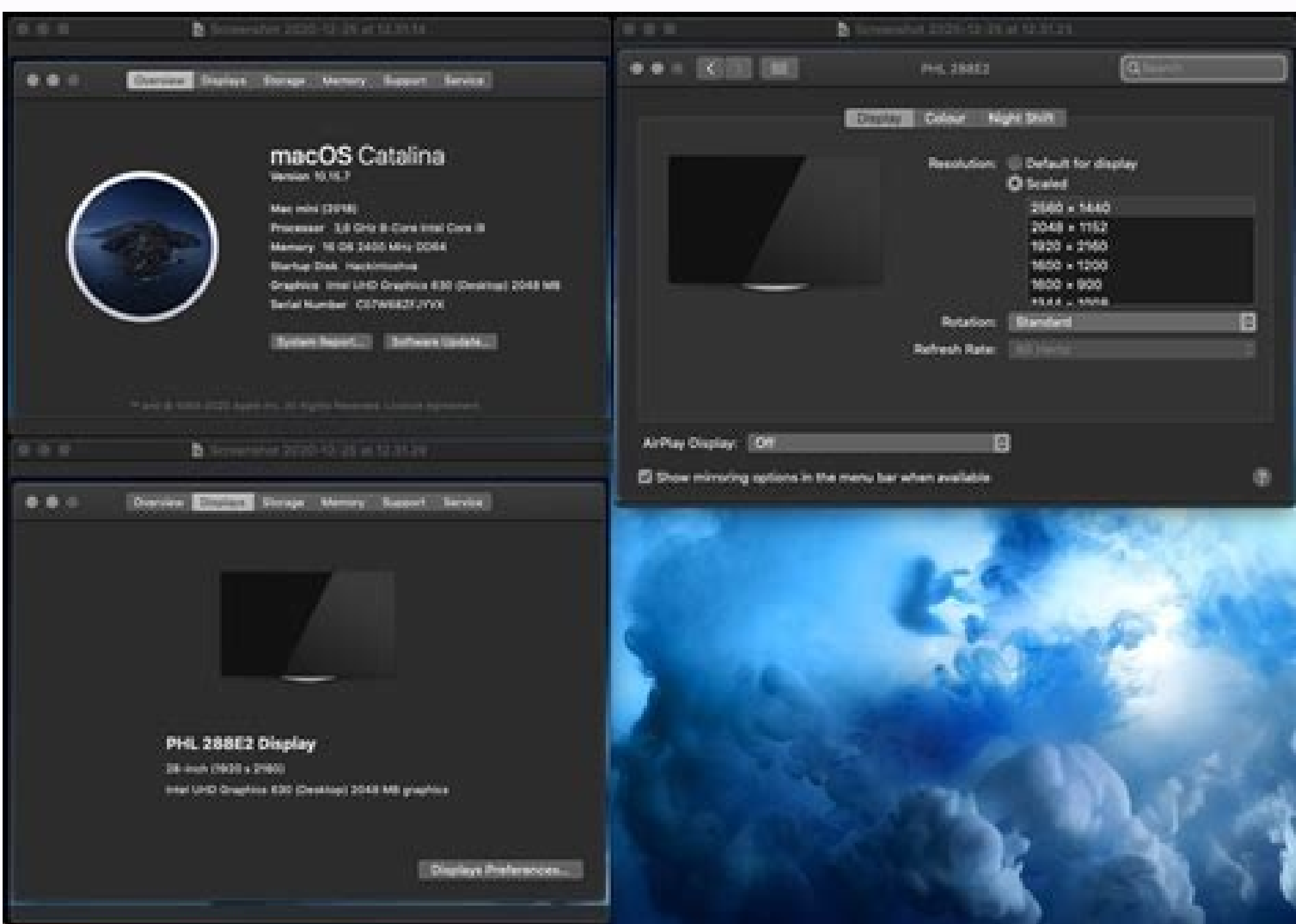



I'm not robot  reCAPTCHA

Continue



2-3 M.I.T.

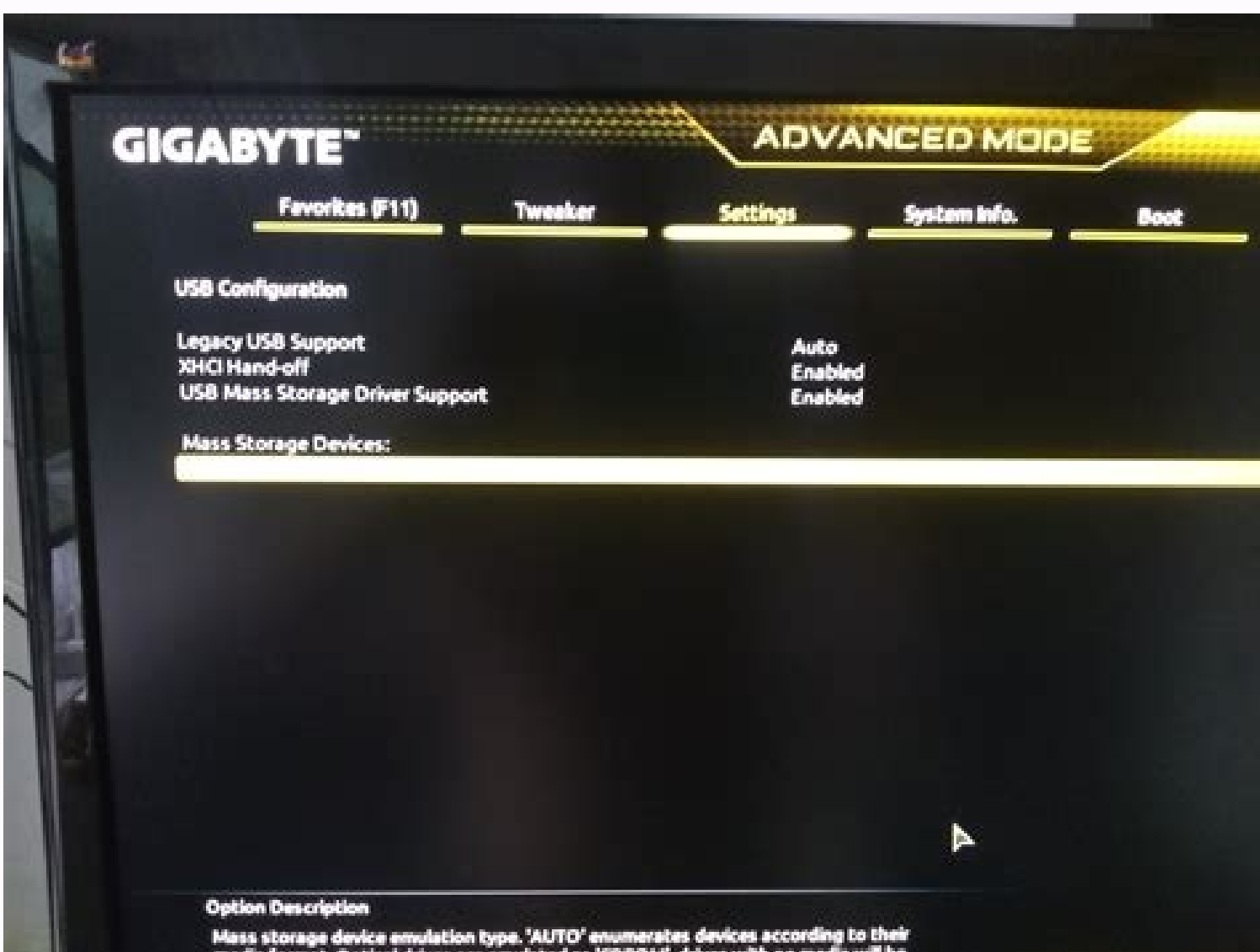


 Whether the system will work stably with the overclock/overvoltage settings you made is dependent on your overall system configurations. Incorrectly doing overclock/overvoltage may result in damage to CPU, chipset, or memory and reduce the useful life of these components. This page is for advanced users only and we recommend you not to alter the default settings to prevent system instability or other unexpected results. (Inadequately altering the settings may result in system's failure to boot. If this occurs, clear the CMOS values and reset the board to default values.)

▶ **Advanced Frequency Settings**

- **CPU Base Clock**
Allows you to manually set the CPU base clock in 0.01 MHz increments. (Default: Auto)
Important: It is highly recommended that the CPU frequency be set in accordance with the CPU specifications.
- **Host Clock Value**
This value changes with the CPU Base Clock setting.
- **Graphics Slice Ratio** ^(Note)
Allows you to set the Graphics Slice Ratio.
- **Graphics UnSlice Ratio** ^(Note)
Allows you to set the Graphics UnSlice Ratio.
- **CPU Upgrade** ^(Note)
Allows you to set the CPU frequency. Options may vary depending on the CPU being used. (Default: Auto)
- **Enhanced Multi-Core Performance**
Determines whether to allow the CPU to run at Turbo C1 speed. **Auto** lets the BIOS automatically configure this setting. (Default: Auto)
- **CPU Clock Ratio**
Allows you to alter the clock ratio for the installed CPU. The adjustable range is dependent on the CPU being installed.
- **CPU Frequency**
Displays the current operating CPU frequency.

(Note) This item is present only when you install a CPU that supports this feature. For more information about Intel® CPUs' unique features, please visit Intel's website.



For CPU reference parameters it is true, but normally I do not sit running CPU benchmarks. Initially I chose 2 x 16 GB Corsair LPX DDR4-2666 because they are quite fast and still cheap. It only lasted a week, so I didn't come across all the obstacles, but whoever I came across was easily solved. What finally works Copy Cloner did not really like the

